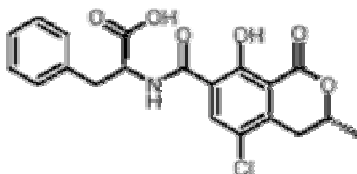


[Home](#)[Products](#)[Services](#)[Technical Information](#)[News & Events](#)[Feature of the Month](#)[Vinquiry Travels](#)[About Vinquiry](#)[Employment](#)[Site Search](#)[Customer Login](#)[Contact Us](#)

New Ochratoxin Analysis at Vinquiry!

A European Union (EU) Committee has voted to amend Regulation 466/2001 to establish a new maximum level of Ochratoxin in wine and grape juice. All wine imported to the EU must not have levels of Ochratoxin above 2µg/kg (parts per billion). This Regulation is applicable for products produced from the 2005 harvest and all subsequent harvests.

In the past, wine and grape juice has not thought to have been a large source of Ochratoxin, but it has recently been identified as the second most important source behind cereals. Ochratoxin is a mycotoxin which at certain levels is carcinogenic and toxic. A high intake of Ochratoxin has been linked with renal disease and urinary tract cancers in humans. It has also been thought to cause tumors in animal kidneys and other organs.



The main fungi responsible for producing Ochratoxin in grapes and wines has been identified as *Aspergillus* section *Nigri*, specifically *Aspergillus carbonarius* and *Aspergillus nigri*. Ochratoxin, as a by product of these fungi, can occur naturally in the field or on grapes after harvest. The concentration of Ochratoxin increases during maceration, but is reduced during and after alcoholic fermentation.

Vinquiry now performs Ochratoxin analysis upon request on wines ready for export. A separate form is prepared indicating Ochratoxin levels along with VI-1 forms. Please specify that an Ochratoxin test is needed when submitting samples to Vinquiry.

Sampling

- Vinquiry requires a 50mL sample of finished wine for the Ochratoxin test. Additional sample besides the export sample is not needed.

For pricing on Ochratoxin analysis, please call 707-838-6312.

[[Home](#)] [[Products](#)] [[Services](#)] [[Technical Information](#)] [[News & Events](#)] [[Feature of the Month](#)] [[Vinquiry Travels](#)]
[[About Vinquiry](#)] [[Employment](#)] [[Site Search](#)] [[Customer Login](#)] [[Contact Us](#)]